

MAKING SENSE

Pentagonal problem

Prof. Guillermo Palau Salvador (INGENIO-CSIC)
Co-autor: Yanus HUB



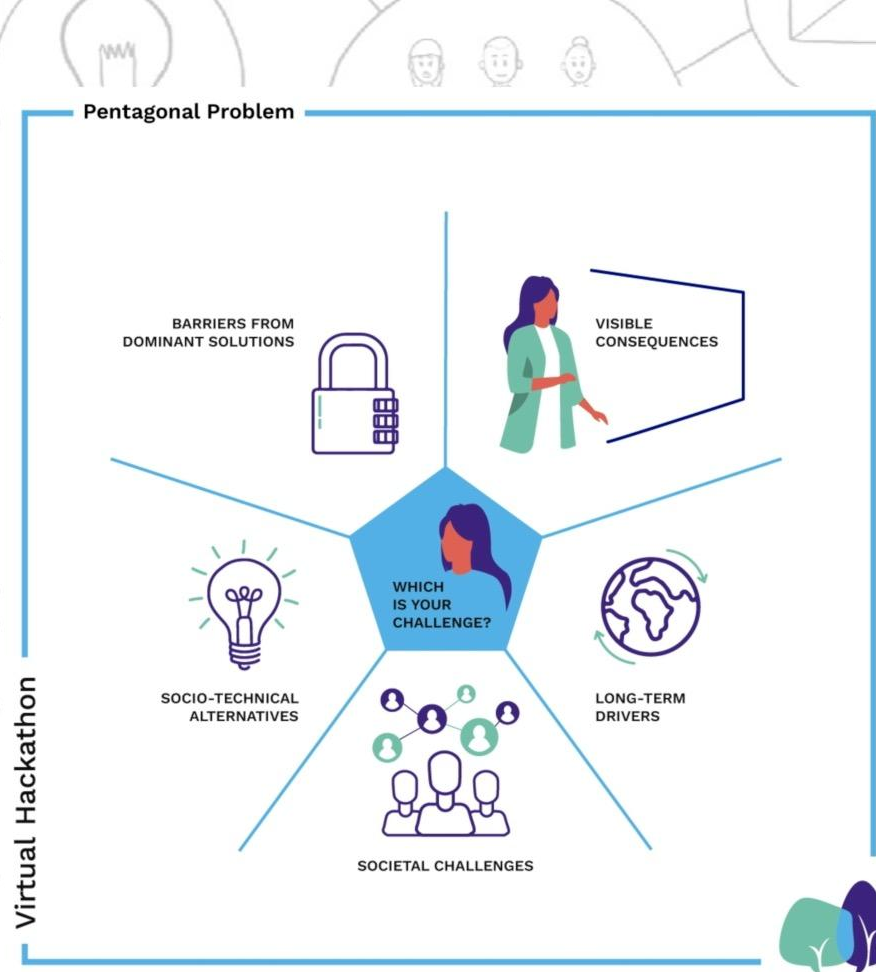
**Virtual
Hackathon**



**Cofinanciado por
la Unión Europea**

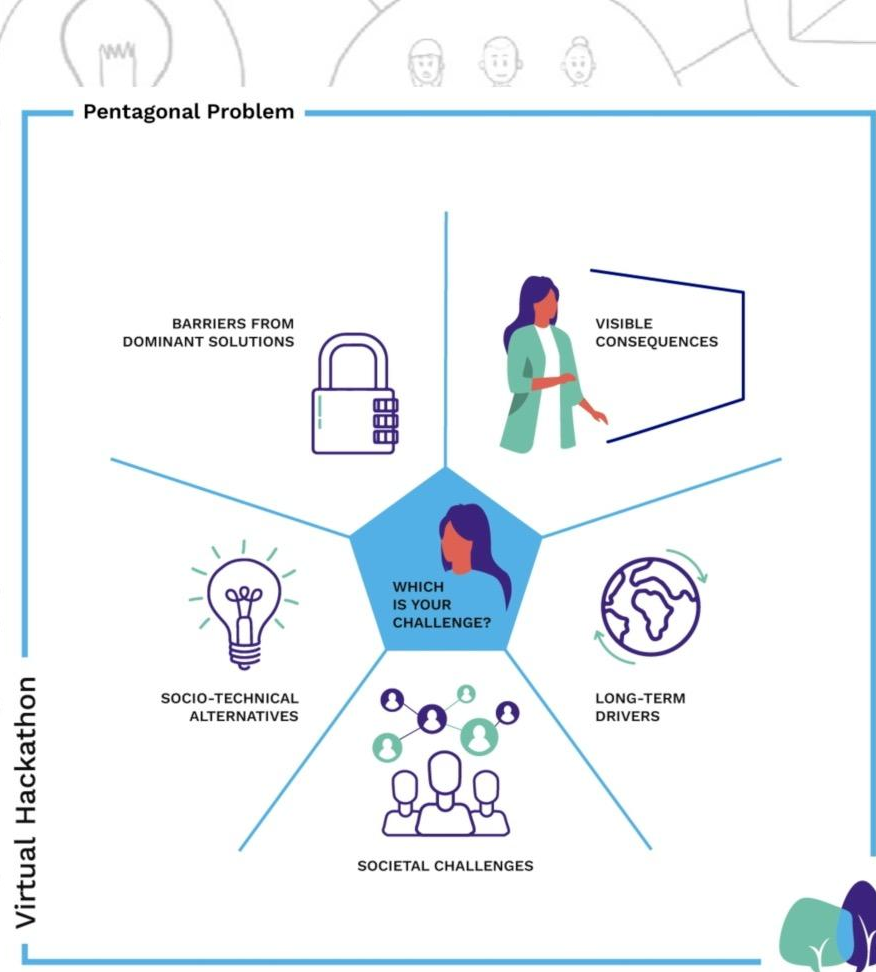
The background features a network of interconnected circular icons. These icons include: a lightbulb (idea), three business professionals, a dollar sign, three construction workers, a gear, a family, three medical professionals, a factory, a question mark, a euro sign, a clock, a laptop, and an envelope. The central text 'What is it?' is superimposed over a circular icon containing a building with a flag on top.

What is it?



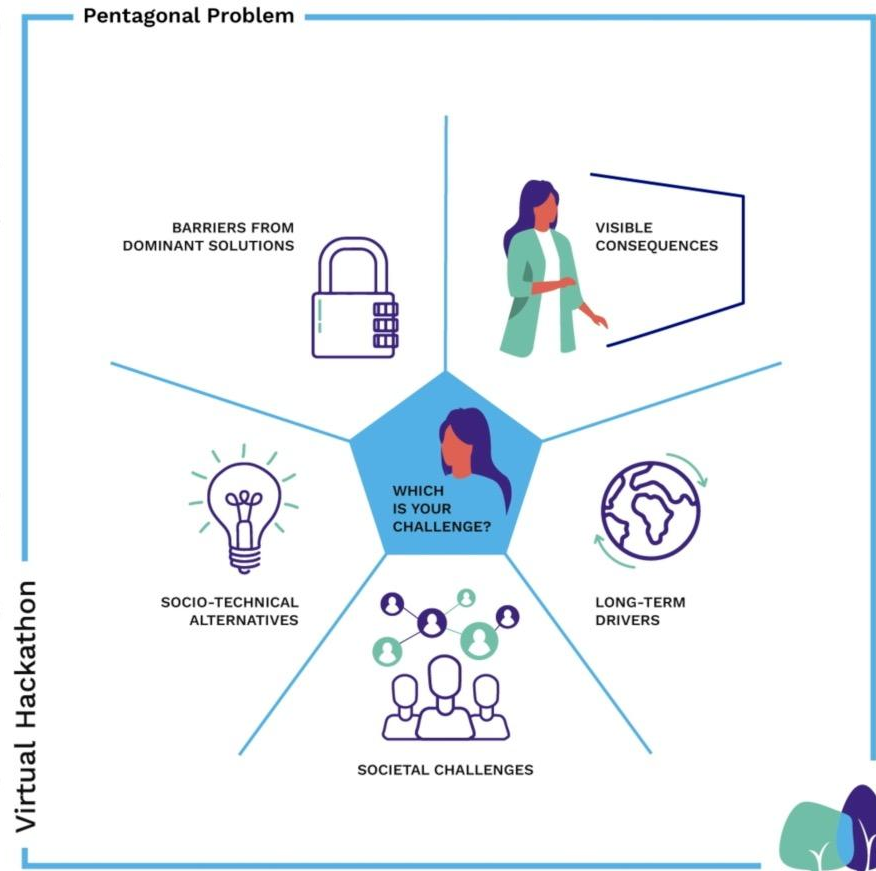


When to use?

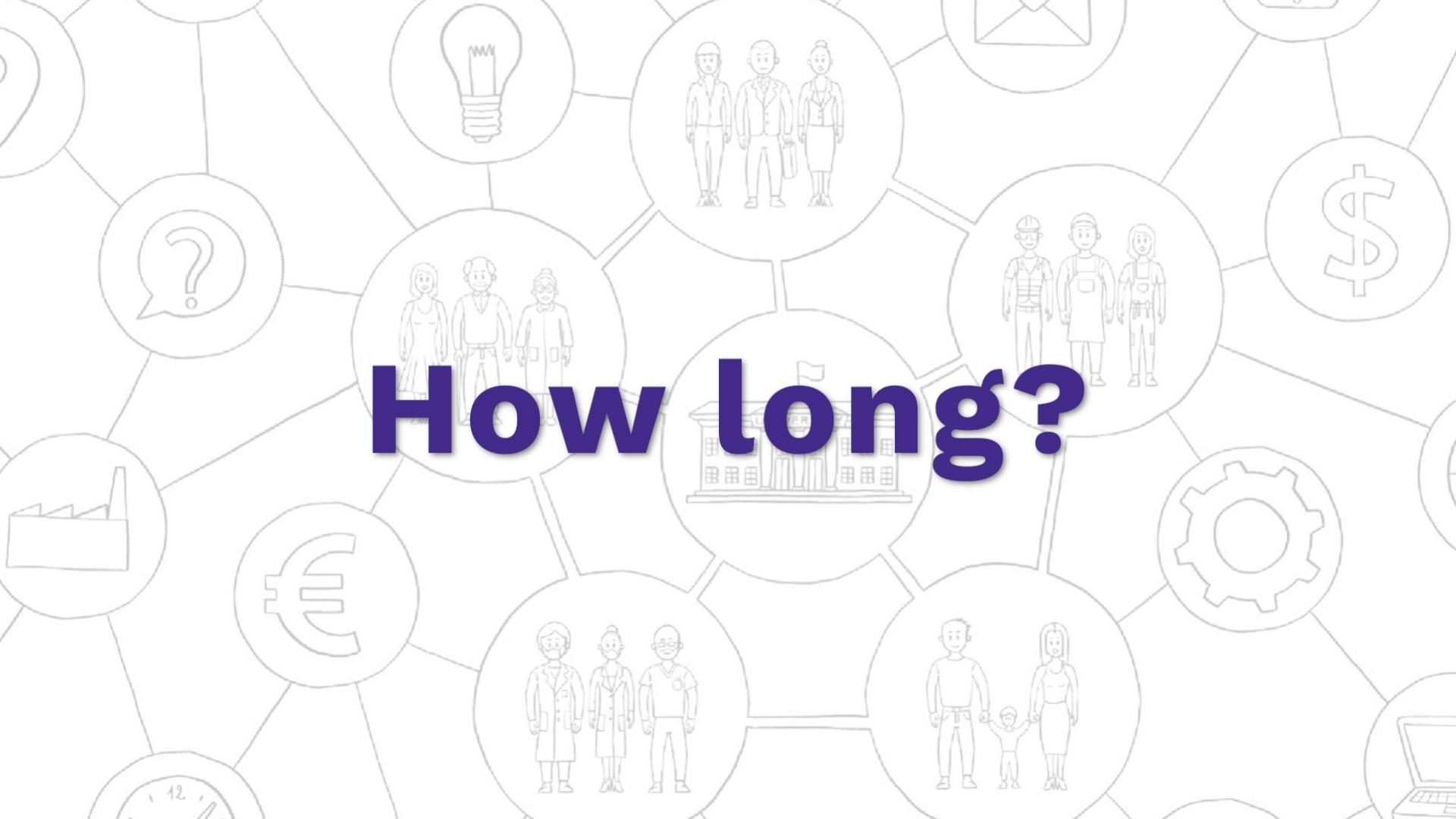


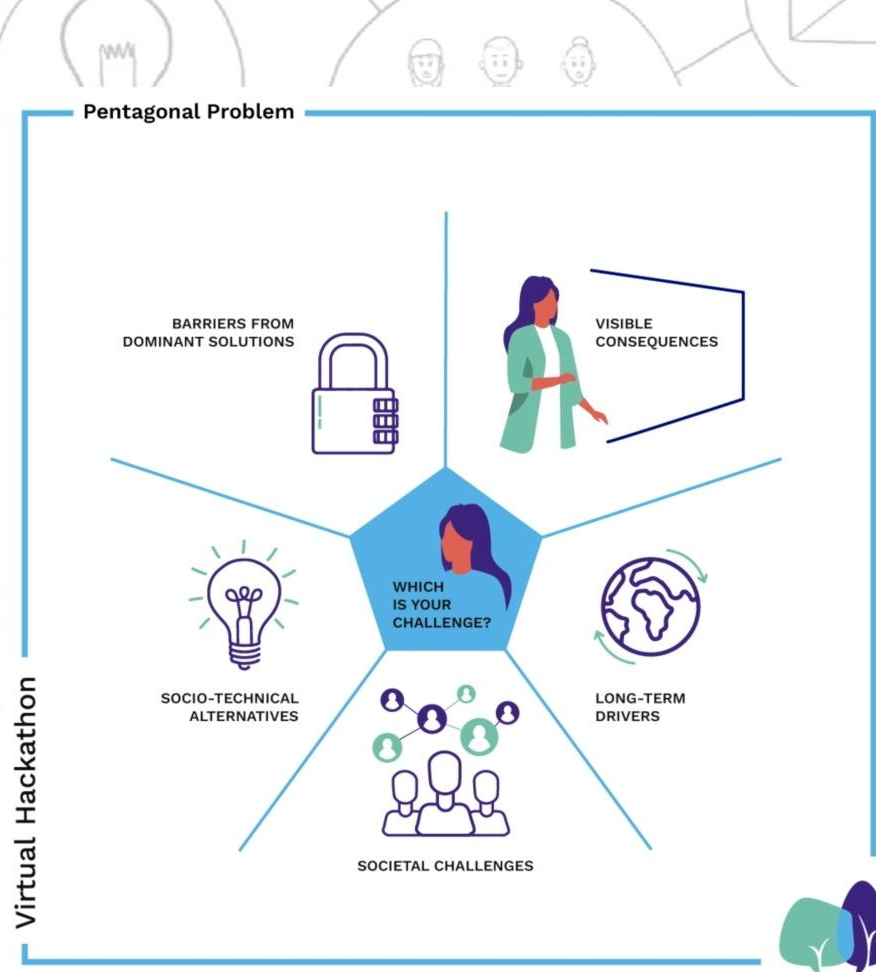
The background features a network of interconnected circular nodes. Each node contains a different icon: a lightbulb, three business professionals, an envelope, a dollar sign, a question mark, three construction workers, a factory, a university building, a gear, a Euro symbol, three medical professionals, a family, a clock, and a laptop.

Why is it useful?



How long?





THE PROCESS



Virtual
Hackathon



Cofinanciado por
la Unión Europea



STEP 1

Define yourself and state your problem.

Pentagonal Problem

Virtual Hackathon

BARRIERS FROM
DOMINANT SOLUTIONS



VISIBLE
CONSEQUENCES



How to move
towards
sustainable and
healthy eating on
the Valencia
campus

SOCIO-TECHNICAL
ALTERNATIVES



LONG-TERM
DRIVERS



SOCIETAL CHALLENGES





STEP 2

Visible consequences

Pentagonal Problem

BARRIERS FROM DOMINANT SOLUTIONS



Food waste

VISIBLE CONSEQUENCES

Health problems

Increase in CO2 emissions

Heart diseases

Eating disorders

Poor academic performance

Waste increase

Degradation of spaces

Generation of bad eating habits

How to move towards sustainable and healthy eating on the Valencia campus

SOCIO-TECHNICAL ALTERNATIVES



LONG-TERM DRIVERS

SOCIETAL CHALLENGES



Virtual Hackathon





STEP 3

Long term drivers

Pentagonal Problem

Virtual Hackathon

BARRIERS FROM DOMINANT SOLUTIONS



Food waste



VISIBLE CONSEQUENCES

Poor academic performance

Heart diseases

Eating disorders

Health problems

Increase in CO2 emissions

Waste increase

Degradation of spaces

Generation of bad eating habits

How to move towards sustainable and healthy eating on the Valencia campus

SOCIO-TECHNICAL ALTERNATIVES



Inactive society



LONG-TERM DRIVERS

Greenhouse gases

Rising temperatures

Poor use of land

SOCIETAL CHALLENGES





STEP 4

Social challenges

Pentagonal Problem

Virtual Hackathon

BARRIERS FROM DOMINANT SOLUTIONS



Food waste



VISIBLE CONSEQUENCES

- Health problems
 - Heart diseases
 - Eating disorders
 - Increase in CO2 emissions
- Poor academic performance
- Waste increase
- Degradation of spaces
- Generation of bad eating habits

How to move towards sustainable and healthy eating on the Valencia campus

SOCIO-TECHNICAL ALTERNATIVES



Inactive society



LONG-TERM DRIVERS

- Greenhouse gases
- Rising temperatures
- Poor use of land

Perception of healthy food as expensive

Perception of healthy food as unappetising

SOCIETAL CHALLENGES

- Ideologically opposing currents
- Difficulty in consuming local products due to the functioning of the university





STEP 5

Socio-technical alternatives

Pentagonal Problem





STEP 6

Dominant solutions

Pentagonal Problem





STEP 7

Debrief

Pentagonal Problem



MAKING SENSE

Pentagonal problem

Prof. Guillermo Palau Salvador (INGENIO-CSIC)
Co-autor: Yanus HUB



**Virtual
Hackathon**



**Cofinanciado por
la Unión Europea**